

Sears Tower Junior

Fabricant (si # de la marque) :		Pays de fabrication :	Allemagne
Début de fabrication :	1953	Fin de fabrication :	1956
Rareté :	Rare	Page du McKeown :	881
Type d'appareil :	Box		

Film

Type de film :	127	Nombre maxi de vues :	8
Format :	4 x 6,5 cm	Format :	
Format :		Format :	
Avancement :	Molette/CIÃ©	Position :	Sur le cotÃ©
Rembobinage :	Non	Position :	-

Exposition

Cellule :	Non	Position :	-
Sensibilité :			

Obturbateur

Marque de l'obturateur :	-	Modèle de l'obturateur :	-
Type d'obturateur :	Rotatif	Vitesses :	1/40, T

Objectif

Type d'objectif :		Montage de l'objectif :	Fixe
Marque de l'objectif :	-	Modèle de l'objectif :	-
Monture d'objectif :		Mode de map :	Fixfocus
Focale :		Ouverture maxi :	

Divers

Type de pile :		Couleur du soufflet :	
Forme du soufflet :		Décentrement horizontal :	
Décentrement vertical :		Second viseur :	
Type de viseur :	Interne fixe		

Le Tower Junior est un Bilora Boy.

www.collection-appareils.fr

www.collection-appareils.fr

TOWER Box Cameras imported from Germany

Choose a complete flash outfit or a popular TOWER camera



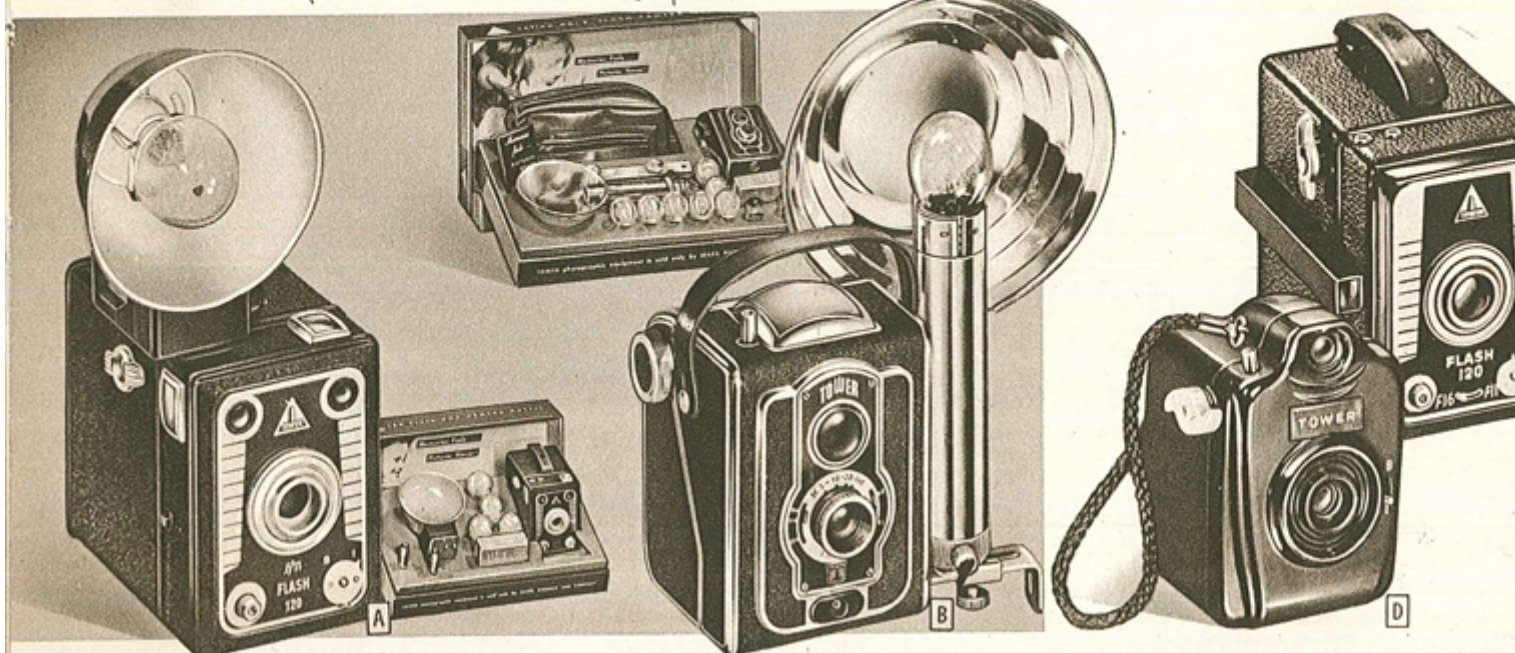
Indoor Pictures—
they're easy and fun
to take with depend-
able, fast-shooting
TOWER flash units.



Outdoor Pictures—
Easy-to-use view-
finders and pre-foc-
used lenses for fast
aiming and shooting.



Color Pictures—All
cameras on this page
use popular roll film
sizes for full color
pictures.



COMPLETE FLASH CAMERA OUTFITS

\$8.95 Complete Flash Outfit
\$4.69 Camera only

- Includes camera, film, flash, batteries, bulbs
- A real family favorite "aim and snap" camera
- Horizontal and vertical waist-level viewfinders
- Take party pictures with flash unit indoors

A TOWER Box Camera Flash Outfit. Everything you need for picture-taking, indoors and out. Here's the kind of camera that's been a family favorite for years. No adjustments to make. Takes snapshots, time exposures, flashshots... a wide range of picture types to glamorize your photo albums and add extra fun to your hobby... for all the family.

Flashshots are simple to take... just attach flash unit, insert flashbulb, press shutter button! Take sharp, clear pictures indoors at get-togethers, parties... the flash unit is easy to use. Fixed focus for 6 feet and beyond. Cable release socket. Tripod sockets. All-metal body. Takes 8 pictures $2\frac{3}{4} \times 3\frac{3}{4}$ -in. on 120 film. Complete with 120 synchronized box camera, flash unit, 2 penlight batteries, 4 No. 25 flashbulbs, and 1 roll TOWER 120 black and white film. Not postpaid.

3 C 9800—Shipping weight 4 pounds. \$8.95

3 C 9652M—Flash Synchronized 120 Box Camera only. Not postpaid. Shpg. wt. 1 lb. 9 oz. \$4.69

3 C 9656M—TOWER Flash Unit for cameras A and C. Order No. 5 or 25 flashbulbs. Includes 2 penlight batteries. Not postpaid. Shpg. wt. 12 oz. \$2.50

\$23.50 Complete Flash Outfit Cash—\$2.50 Down
\$14.95 Camera only

- Look at all you get—reflex type camera, flash unit, batteries, bulbs, album, gadget bag
- 3 lens openings... double exposure prevention
- Focuses from 5 feet... coated, achromatic lens

B Complete TOWER Reflex Type Flash Outfit. Adjustable snapshot camera shoots 12 black and white pictures $2\frac{3}{4} \times 2\frac{3}{4}$ -in. ... takes fine Kodachrome pictures for a camera of this moderate price. Here's why: lens is easily adjusted to let in an extra amount of light often needed for color pictures. Achromatic lens is better than most low-priced camera lenses. Coated lens to cut down glare, admit more light. Cocking shutter... so easy to use.

Camera takes flashshots too, and time exposures. Lens openings at f:7.7, f:11 and f:16 for dull, average and bright days. Adjusts easily for sharp focus from 5 feet to infinity. Sturdy all-metal body, hand strap. Cable release, tripod sockets. Complete with reflex type, synchronized camera, flash unit, 2 "C" batteries, 8 No. 25 flashbulbs, suggestion album, 1 roll TOWER 120 film, gadget bag. Not postpaid.

3 C 9820—Shipping wt. 5 lbs. Outfit \$23.50

3 C 9657M—Camera only. Shpg. wt. 1 lb. 9 oz. \$14.95

3 C 9686M—Leather Eveready Case. Wt. 1 lb. \$2.98

3 C 9694M—Flash Unit with 2 "C" batteries. Euro-pean cord. Use standard screw base bulbs or No. 5 or 25. Not postpaid. Shpg. wt. 1 lb. \$5.35

Popular TOWER Box Camera

Choose Flash model (C) or Snapshot Type

\$5.95 Flash Camera
\$3.29 Junior Box Camera

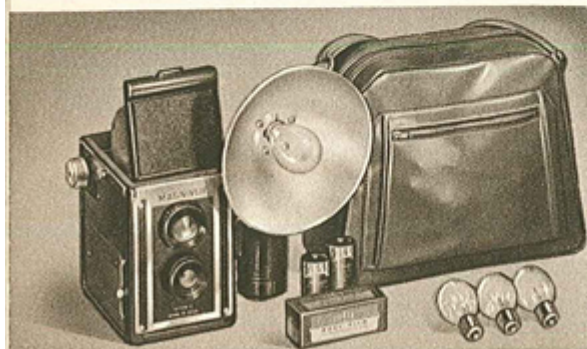
C TOWER Flash Box Camera. Handy, eye-level scopic viewfinder... lens focuses from 6 feet to infinity. Handsome, leathette-covered metal Sharp, color-corrected f:11 lens. Also f:16 lens of for extra bright days. Lens adjusts to different conditions. Flash synchronized. Plug flash unit in cable socket. Time and instantaneous (1/40 sec.) shutter speeds. Cable release socket. Horizontal and vertical tripod sockets. Eight big, album-size pictures $2\frac{3}{4}$ inches on 120 black and white or color film.

3 C 9653M—Not postpaid. Shpg. wt. 1 lb. 9 oz.

3 C 9656M—TOWER Flash Unit with batteries. No. 5 or 25 bulbs. Not postpaid. Wt. 12 oz.

D TOWER Jr. Box Camera. Handsome, streamlined styling on TOWER's most thrifty camera. Sleek black all-plastic body. Compact... easy to carry with convenient hand strap. Just aim through the telescopic viewfinder and snap the picture. Shutter release plunger with cable release socket, and instantaneous (1/40 sec.) shutter speeds. Focused for you from 6 feet to infinity. Tripod socket. Takes 8 pictures $1\frac{5}{8} \times 2\frac{3}{4}$ -in. on 127 black and white color film. Makes an ideal, inexpensive gift for a minded youngster. A low-priced treat that gives all-around photo results you'll be pleased with.

3 C 9655—Not postpaid. Shpg. wt. 1 lb.



MAGNIVUE Flash Outfit

\$14.95 Complete Outfit

Ten photo items in a camera outfit that's bound to find favor with camera-bugs, young and old. Makes photography possible on a shoe-string budget. Snap pictures to your heart's content, indoors and outdoors. 12 album-size $2\frac{3}{4} \times 2\frac{3}{4}$ -in. pictures on each 120 roll. Easy to use. No guessing—no focusing. Reflex type finder lets you see picture actual size on ground glass screen before you take picture. In focus from 8 feet to infinity. Takes snapshots, time exposures, flashshots. Lens mount diameter 29mm. Outfit includes Magnivue reflex type camera, flash unit, 2 C-type batteries, 4 No. 5 flashbulbs, 1 roll TOWER 120 Orthochromatic film, brown plastic gadget bag. Not postpaid.

3C6637—Not postpaid. Shpg. wt. 5 lbs. Complete outfit \$14.95

3C6103M—Camera only. Not postpaid. Shpg. wt. 1 lb. 5 oz. 9.85

3C6109M—Flash Unit, batteries. Use No. 5 bulbs. Wt. 8 oz. 2.98

TOWER Foto Service

Send all your film to TOWER Foto Service for expert developing, fine printing. Black and white pictures returned in jumbo-size, pocket-folder album. Wallet-size pictures are ideal for sending to servicemen, exchanging with comrades, using for job applications. Photo stamps are so handy to use... tick and stick... fine for books, letter postcards, greeting cards. Sears complete color service offers a selection of prints and enlargements. See pages 66 and 67 for more information.